

Device Managers

To configure and manage a device, you must first start its Device Manager, an application that displays an active graphic representation of the device and offers a variety of menu commands for managing the device. To start a Device Manager:

- Open Windows Explorer to the Network Infrastructure, then double-click a listed device,
or
- If you have integrated ClearSight with HP OpenView, double-click a device icon on the map.
or
- If you have an integrated ClearSight with HP Network Manager, right click on a device icon and choose **Configure Module** or **Configure Device** option.

The contents of a device window is device-dependent, in that it varies according to the device. The example below is for a CrossFire 8000/1. It contains an image of the CrossFire 8000/1, and certain parts of the image are active: click one to issue a command or open a menu. These active areas are called hot spots.

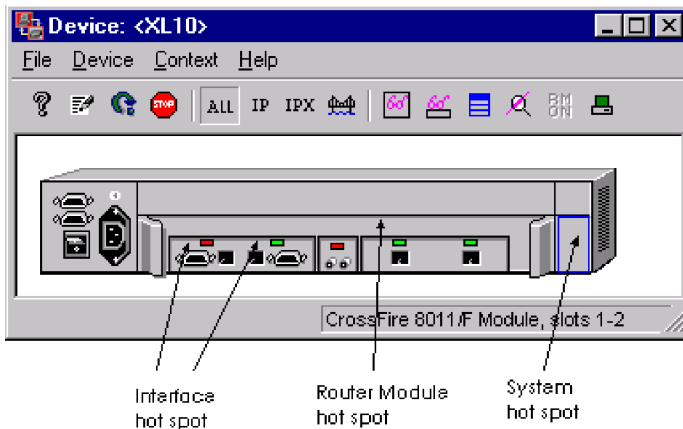


Figure 1. CrossFire 8000/1 Device Panel with Hot Spots Illustrated

- If an option is not available on the device being managed, it is grayed out in the menu, or is not listed at all.
- Some hot spots contain a colored status indicator. For example, an interface hot spot contains a simulated LED that indicates by its color the status of the interface/ port.

Refer to the online help for further information about the specific device you are managing.

Device Window Menu Bar

The menu bar options on the Device window are described below. The options may vary depending on the device being managed.

Device Menu

The **Device** menu contains **Describe** when the Device window is first opened. Select it to display the **Device Description** to enter temporary information about the modules in this device. When you open this window, it displays the device description associated with this device's icon in the map, and you can change that description (for example, to add a new router module), but the additional information is valid only as long as this Device window is open.

Select **Reload** from the **Device** menu to poll the device for the latest configuration information.

Context Menu

The **Context** menu contains options for customizing the contents of the System menu. You can select to see **All Features** (specify that all possible menu options appear on the menus) or, for example, select **IP** to have the menus display only the items that relate to IP routing on the device.

Help Menu

Select **Help / About** to display version information for the Device Manager application for this device and for ClearSight.

Select **Help / Panel** to display help concerning the device.